



# Activities of the Lithuanian Labour Exchange



THE ANNUAL REPORT 2001

# Contents



The Annual Report presents the results achieved by the Lithuanian Labour Exchange in 2001 and a conspectus of Lithuanian labour market developments. Readers requiring more detailed information are referred to the Annual Report for 2001.

Vidas Šlekaitis, Director General – “more optimism and possibilities in labour market”	3
Management by Objectives – the main principle of Lithuanian Labour Exchange’s activity	4
Placement Service – at home and abroad	5
The Activity Guaranty – for every job seeker	6
Implementation of Active Labour Market Policy Programmes	7
Towards Information Society	8
Making Services More Effective	9
Development of Social Partnership	9
Co-operation with Foreign Partners	9
Labour Market in 2001	10
Lithuanian Labour Exchange – structure and main functions	12
The Main Events in 2001	13

# Vidas Šlekaitis, Director General – “more optimism and possibilities in labour market”



**R**ecovery of Lithuanian economy brings certain optimism. Labour exchanges registered the biggest number of job vacancies, labour supply and number of mass lay-offs decreased.

Problem of long-term unemployment and rather high unemployment rate are the most pressing problems on labour market.

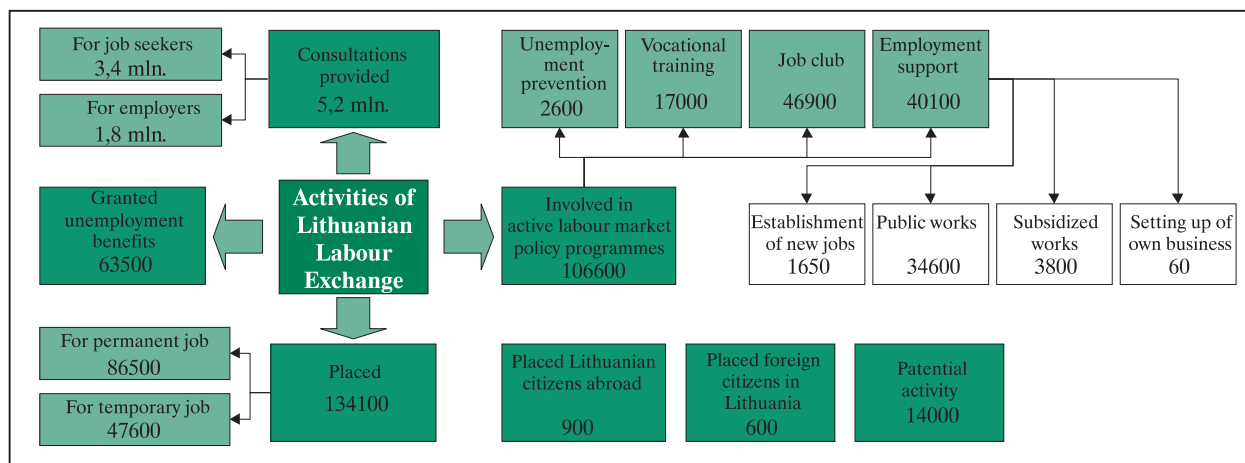
Achieving the targets, set by the Ministry of Social Security and Labour, the Lithuanian Labour Exchange carried out active labour market policy measures, which made it possible to decrease expected average annual unemployment rate by 1,3 percent. We placed and involved into active labour market policy programmes 255 thousand job seekers. Through the implementation of the Programme of the Republic of Lithuania for Increasing Employment for 2001–2004, we attempted to strengthen the role of labour exchanges and increase their responsibility for the better functioning of local labour market and implementation of local employment initiatives' projects. The Law on the Support of Unemployed provides for new services for unemployed, namely the programme of subsidising of employment support.

Comparing with a few years ago, the Lithuanian Labour Exchange became an open service providing institution. We further developed management by objectives and redirected our activity from passive to active support of the unemployed. We reorganised activity of local labour exchanges and strengthened consultation and mediation services.

With the help of modern information technologies we implemented the system of open information and direct clients' service. On the homepage of Lithuanian Labour Exchange [www.ldb.lt](http://www.ldb.lt) we created "Labour Exchange on Internet", designed for job search and supply and "Mass Lay-off Handbook".

The year 2001 witnessed opening of self-information service, vocational information and youth job centres.

We established close contacts with the employers and their associations: a lot of placement and unemployment prevention problems are solved jointly. Labour market monitoring makes it possible immediately evaluate changes on labour market and pass adequate decisions increasing effectiveness of our activity and mitigating possible consequences caused by unemployment.



## Management by Objectives – the main principle of Lithuanian Labour Exchange’s activity

Activity of Lithuanian Labour Exchange was based on management by objectives. Individual tasks and indicators of achievement were set for every labour exchange, taking into account the situation on local labour market. Labour market monitoring system made it possible to amend the tasks under the circumstances of changing situation on labour market.

Implementation of labour market policy measures focuses on matching of supply and demand, realisation of active labour market policy, development of open client service, implementation of EU employment guidelines and labour market monitoring, development of modern information technologies, co-operation with foreign partners.

► At the beginning of 2002, number of staff employed in the system of labour exchanges made 1380 people, where 81 per cent were women, 19 per cent – men. 80 per cent of specialists have higher university education.

### ► Objectives of activity:

- prevention of long-term unemployment;
- improvement of business environment and promotion of entrepreneurship;
- increasing of the role and responsibility of local labour exchanges with the aim to improve functioning of local labour market and promote employment.

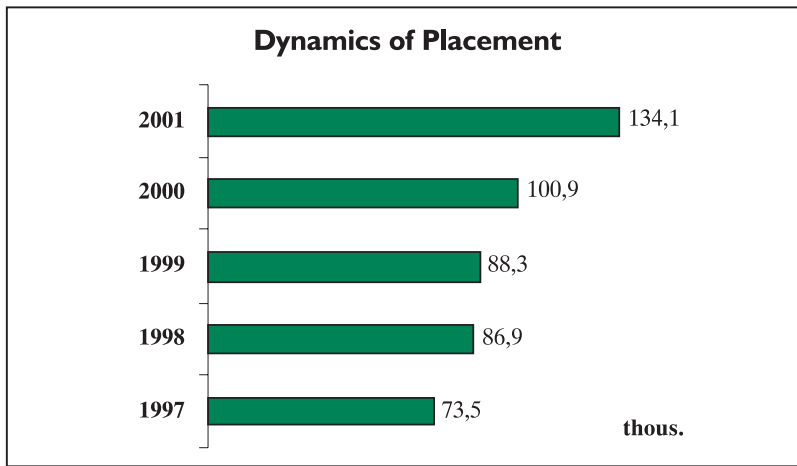
### ► Tasks:

- with the help of active labour market policy measures reduce expected average annual unemployment rate by 1,0–1,1 per cent, and youth unemployment rate by 1,3–1,4 per cent;

- involve into active labour market policy programmes 90145 job seekers;
- to make sure that newly registered unemployed are offered a new start and involved into active labour market policy measures before they have been unemployed for 12 months and young (under 25) unemployed – before they have been unemployed for 6 months.

### ► Main results:

- provided consultation and advice for 5,2 million job seekers and employers individually and in information centres;
- mediated placement of 134,1 thous. job seekers, including:
  - 28,9 thous. youth and first time job seekers;
  - 26,3 thous. long-term unemployed;
- involved into active labour market policy programmes 106,6 thous. people, including:
  - 36,5 thous. young people and first time job seekers;
  - 41,4 thous. long-term unemployed;
- reduced expected average annual unemployment rate by 1,3 per cent and youth unemployment rate – by 1,0 per cent.
- increased employability of 255 thous. job seekers, i.e. more than every second unemployed.



## Placement Service – at home and abroad

**Placement increases.** According to the data of survey on population's employment, majority of unemployed is seeking job through local labour exchanges. In 2001 the biggest placement indicator was achieved – on average 12 thous. people were placed monthly. Development and expanding of open information and placement forms enabled to achieve the highest increase of placement – 1,3 times.

### Placement of unemployed increased

134,1 thous. people were placed, i.e. 33,2 thous. more than in 2000. In order to expand placement, new placement mediation service through Internet was introduced.

- Both temporary and permanent employment increased.
- Number of placed in industry increased. Major part (53 per cent) is placed in services.
- Number of placed males and females is proportionate to the registered number.

Placed into job, thousands	2000	2001	Change, %
Total	100,9	134,1	32,9
Permanent employment	67,8	86,5	27,6
Temporary employment	33,1	47,6	43,8
By occupation			
Industry, manufacturing	35,2	50,7	44,0
Business administration	3,2	4,6	43,7
Clerical work	3,4	3,6	5,9
Commerce	8,3	10,4	25,3
Agriculture, hunting and forestry	1,4	1,5	7,1
Transport and communication	6,3	6,7	6,3
Construction	10,1	11,4	12,9
Services	8,7	11,0	26,4

- Placement possibilities for job seekers, who are the specialists of information technologies, industrial and mechanical engineering, commerce, increased the most,

i.e. more than 2 times; sales assistants, managers – 1,5 times, whereas placement possibilities for nurses, specialists of environment protection, ecology and sea transport decreased by more than 1,5 times.

### Co-operation with employers strengthens

One of the main objectives of co-operation with employers is to select or prepare people of necessary qualification who could fill in job vacancies.

The strategy and tactics of co-operation with employers is differentiated with respect to the different types of the enterprises: the ones that establish and liquidate job vacancies, those that work not at full capacity or are being liquidated or those that expand production and implement new technologies or services.

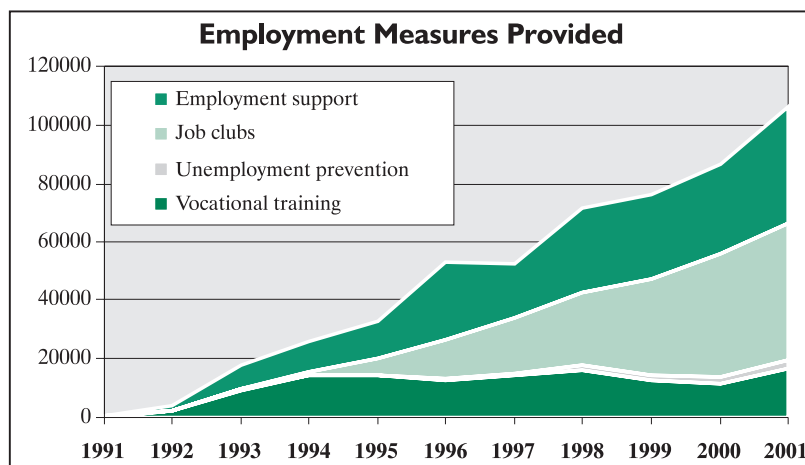
- Labour exchanges provided services to 30 thous. employers.
- 6,3 thous. co-operation agreements with the employers were signed.

### Placement abroad

Free movement of workers is an important means of labour market regulation. Mediation of Lithuanian Labour Exchange made it possible to place almost 900 people abroad.

### Temporary placement of foreigners in Lithuania

Placement of foreign labour force was further carried out in Lithuania. This enabled to take over experience of other countries, to prepare specialists of our own and promote investment. In 2001 National Labour Exchange issued 599 work permits for the employment of foreigners in Lithuania.



## The Activity Guaranty – for every job seeker

For a number of years activity of Lithuanian Labour Exchange is based on transition from passive to active support of unemployed. The Activity Guaranty provides for all the activities for the unemployed in an individual Action Plan.

### Client service

Labour exchanges ensured that every newly registered unemployed was offered and provided with employment measures within 12 months, and every young unemployed under 25 – within 6 months.

- Every unemployed individual is provided with an Action Plan, identifying the job seeker's needs in order to be able to compete on labour market, as well as all the measures and programmes as set forth in the Law on Support of Unemployed.

### Implementation of special programmes of integration into labour market

#### Youth (under 25) Employment

- 62,3 thous. young unemployed were involved into labour market policy measures, i.e. 13,7 thous. more than in 2000.
- Youth makes more than a half of involved into vocational training and into the work subsidised from the Employment Fund.
- 1,0 per cent average monthly reduction of expected youth unemployment rate.

#### “The First Step in Labour Market “

- 28,5 thous. first time job seekers were involved into labour market policy measures, 9,5 thous. of them were placed into jobs.
- 90 per cent of first time job seekers were integrated into labour market.

#### Active integration of graduates

- All registered graduates of higher, high and vocational training schools were provided with labour market policy measures.
- 70 per cent of graduates were involved into vocational career development programmes.

#### Long term unemployment prevention

- 67,7 thous. long term unemployed were involved in labour

market policy measures, 26,3 thous. of them placed into jobs.

- Every third participant of active labour market policy programmes is long term unemployed.
- Number of involved in labour market policy measures increased by 1,5 time and of placement – twice.

#### Support of employment of socially vulnerable people

- 60,8 thous. mostly socially vulnerable people were involved into labour market policy measures, which makes 90 per cent of registered unemployed.
- Measures of integration into labour market made it possible to reduce share of these people among unemployed from 31,3 to 29,2 per cent.

#### Vocational training of people who were discharged from imprisonment

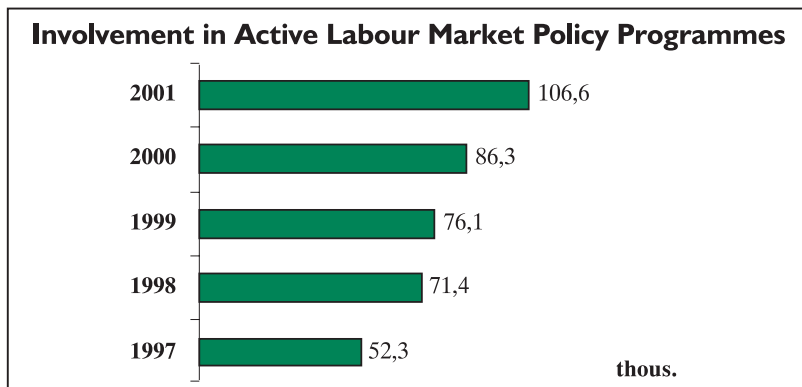
- 100 people who were discharged from imprisonment acquired new professional qualifications. Financing of the programme came from the State budget.
- Two thirds of ex-prisoners, registered in labour exchange, were integrated into labour market.

#### “Talent bank”

- Database of high skilled labour force was created on Internet [www.ldb.lt](http://www.ldb.lt)
- 3,0 thous. job seekers were registered in this database.
- 2/3 of “Talent Bank” participants have higher university education.

#### Local employment initiatives

- 16 projects were selected and they enabled to establish 150 new jobs, financed from the State budget.
- A half of the jobs was created in service sector, over one third – in production development, the remaining part – in agriculture.



## Implementation of Active Labour Market Policy Programmes

Implementation of labour market active policy programmes helps the job seekers to integrate into labour market. For the first time in 2001 more than 100 thous. people were involved into these programmes.

### Involvement into programmes

	2000	2001	Change, %
Total, thous.	86,2	106,6	23,7
<b>By programmes</b>			
Unemployment prevention	1,8	2,6	44,4
Vocational training	11,7	17,0	45,3
Job clubs	42,4	46,9	10,6
Employment support	30,3	40,1	32,3
<b>of them:</b>			
establishment of new jobs	1,0	1,6	60,0
subsidised works	2,5	3,8	52,0
public works	26,8	34,6	29,1
starting of own business	0,04	0,06	50,0

### Unemployment prevention

- 2,6 thous. employees, who have been given a notice of dismissal, were referred to retraining or improvement of qualification.
- 89 programmes limiting unemployment were prepared together with employers. They involved 5,8 thous. employees.
- 24 "mini" labour exchanges were established in the enterprises where mass lay-offs are taking place.

### Vocational training

- 17 thous. job seekers were involved in vocational training, retraining or skills improvement programmes.
- 80 per cent of unemployed were placed during 6 months after vocational training.
- Average duration of training is 18 weeks.
- Tendering for vocational training was implemented for the first time.
- 102 training institutions and 496 training programmes, including 104 skills improvement programmes, have been selected after the tender.

### Job clubs

- 46,9 thous. job seekers were involved into job clubs, in order

to motivate and encourage their activity on labour market.

- Number of participants of job clubs during six years expanded 8 times.
- 66,0 per cent of participants settled their employment related problems.

### Employment support

Financing from the Employment Fund made it possible to establish 40,0 thous. job vacancies, i.e. 10 thous. more than in 2000.

### Establishment of new jobs

- 1,2 thous. new jobs were established, which made it possible to integrate into labour market most socially vulnerable groups of job seekers.
- During the year 1,6 thous. job seekers with additional employment guarantees were placed into those job places.
- Permanent job is safeguarded for 3 years.

### Works subsidised from the Employment Fund

- 3,8 thous. unemployed were placed into subsidised works.
- 0,5 thous. of people without vocational qualification chose the sphere of studies.
- 71 per cent of unemployed were placed into permanent jobs after subsidised works.

### Public works

- 34,6 thous. people were temporary integrated into labour market in public works organised together with municipalities and employers.
- Since 1997, involvement into public works increased three times.
- 2 thous. employers organised public works, i.e. seven times more than in 1999.

### Starting of own business

- 60 unemployed started their own business after they had been granted interest free loans by the labour exchanges.
- 4,0 thous. unemployed participated in the free of charge training courses of business fundamentals.
- 14,0 thous. unemployed purchased preferential patent.
- Business related tax benefits were initiated in the municipalities.



## Towards Information Society

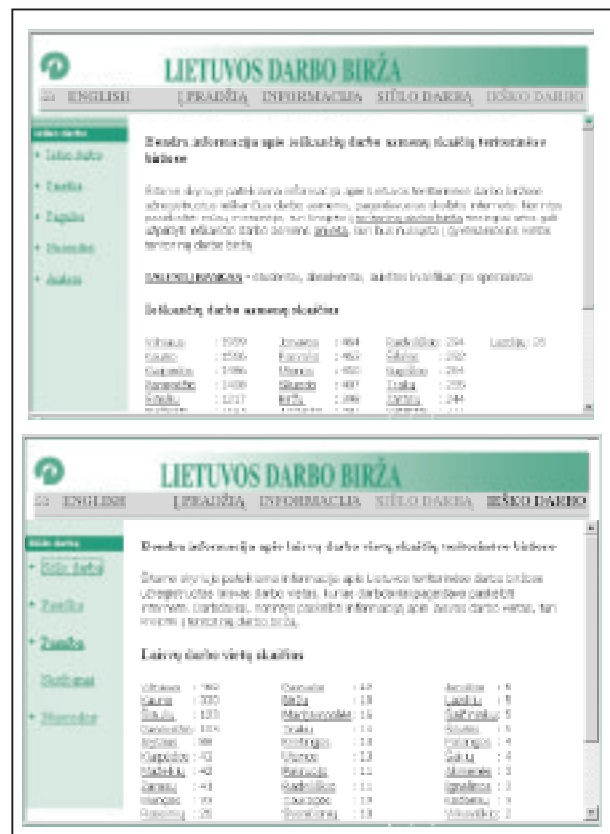
Information System “DBIRŽA–I” provides computer support for all labour exchanges’ operations, including job placement, guidance, counselling services, administration of labour market policy programmes and financial accounting. Open information system, oriented towards the clients’ needs, has been created. It is already functioning in all the local labour exchanges that use modern information technologies.

Lithuanian Labour Exchange has implemented open labour market information system.

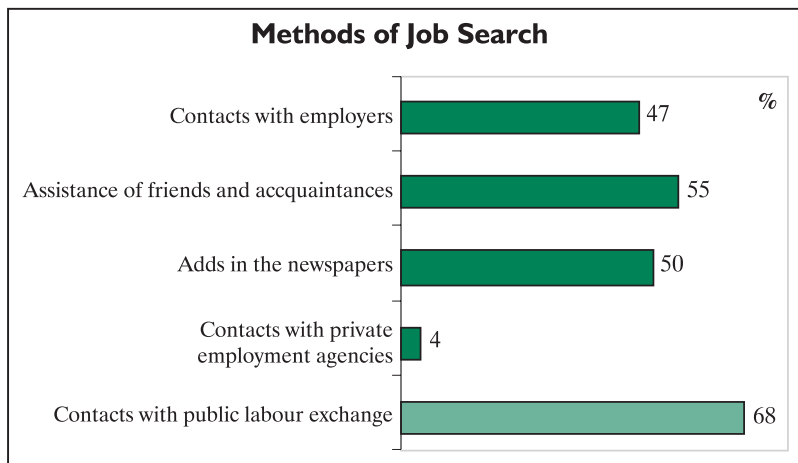
- Use of Information System enabled labour exchanges to work faster and more efficiently.
- The modern information technologies made it possible to modernise information, counselling, mediation and placement services.
- Information and consultation centres are established in all local labour exchanges.
- Open information services are provided in specialised Job, Self Information Service, Vocational Information and Youth Job centres.
- There are 102 Self Information Service terminals, 7 of which are designed for vocational guidance and testing, 46 – for job search and vocational guidance and testing.
- 240 descriptions of professions for vocational information and guidance are prepared, 68 films and 4 tests are designed for the selection of future career.
- The first project of establishment of Youth and Single Parents Centres was prepared, together with Lithuanian–USA joint venture “Philip Morris Lietuva”.
- Development of new forms of services, namely “Information of Clients by Phone”, “Days of Labour Market”.
- Information system gives both the employers and employees better support with respect to information, ideas and operations.

### Implementation of the latest information technologies

- “Labour Exchange on Internet” ensures new client service and management quality.



- “Labour Exchange on Internet” provided matching of labour supply and demand.
- Unique guidebook “Mass Lay-off Handbook” was created.
- All 46 local labour exchanges placed their homepages on [www.ldb.lt](http://www.ldb.lt)



### Making Services More Effective

According to the labour force survey, job search is mostly implemented through public labour exchange.

- Job search through public labour exchange increased from 51 per cent in 1997 to 68 per cent in 2001.
- During 2001, 31,0 thous. unemployed and 11,5 thous. employers participated in the surveys which aimed to evaluate how the job seekers are satisfied with the services provided by labour exchanges.
- More than a half of the employers select their staff with the help of local labour exchanges.
- 90 per cent of employers take advantage of employment mediation service.
- 90 per cent of employers and 80 per cent of unemployed highly estimate services provided by the labour exchanges.
- 62 per cent of unemployed, who received training, are at once placed into job, 91 per cent – by acquired professional qualification.
- Every fourth of surveyed employers estimated vocational preparation of their staff as not quite corresponding to their requirements.
- Employers from service and industry sector, small and medium size enterprises (up to 200 employees), who have participated in the surveys, plan to establish more job places than to liquidate.
- 26 thous. jobs are planned to be established.
- According the survey, 150 thous. new job offers are to be registered.

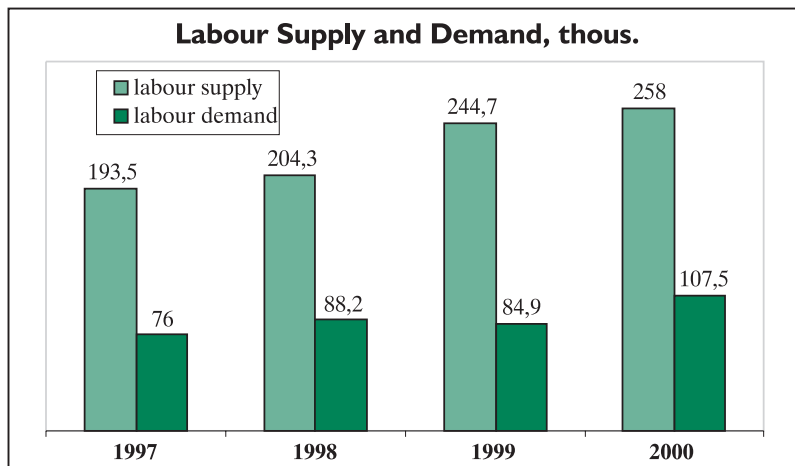
### Development of Social Partnership

- Number of employers, who apply to labour exchanges increased. Regular contacts with 30 thous. employers have been established.
- 22 thous. co-operation agreements with social partners were signed, including 6,5 thous. new.
- 31 thous. visits to employers and 2 thous. meetings with employees were organised.

### Co-operation with Foreign Partners

Co-operation with foreign partners contributed to the improvement of activity of labour exchanges and implementation of new work methods.

- Relations with WAPES and IAPES, employment services of Latvia, Kaliningrad region, Poland, Ukraine, Belarus, Estonia are developed.
- The projects prepared with Swedish National Labour Market Board “Improvement of Activity of Lithuanian Labour Exchange”, “Integration of information systems of Lithuanian Labour Exchange into EURES” were successfully implemented.
- Co-operation of cross-border labour exchanges is developed. In addition to this, Šiauliai, Alytus labour exchanges co-operate with Vyborg and Veijle labour exchanges in Denmark, Panevėžys labour exchange – with Nokia and Hämeenkyrö labour exchanges in Finland, Šakiai labour exchange – with Solvesborg labour exchange in Sweden.
- New co-operation agreements between Vilnius and Tallin, Panevėžys and Piarnu, Rokiškis and Laanemaa (Estonia) have been signed.
- Lithuanian Labour Exchange takes active part in “Baltic Sea Region Sector Programme on Labour Market Policy” – “Labour Market Monitoring”, the project of Danish Ministry of Labour and the Ministry of Social Security and Labour of Lithuania – “Towards Using the Internet as an Operational Tool – The “Mass Lay-off Ring Binder”, “Public Works and Environmental Improvements – Recreational Zone in Jonava”, programmes of Leonardo da Vinci, PHARE Vocational Education and Training, activity of European Training Foundation.
- Swedish National Labour Market Board together with Lithuanian Labour Exchange implemented project for development of Armenian employment services.



## Labour market in 2001



Year 2001 witnessed high unemployment rate. Nevertheless, some positive changes on labour market can be observed. Labour supply decreased, labour demand was growing for the second year in a row, number of mass layoffs decreased. Decreasing of the number of employed slowed down.

### Labour supply

*During 2001:*

- 260,3 thous. registered job seekers, 249,7 thous. of them unemployed;
- number of registered job seekers decreased by 7,1 thous. and unemployed – 8,3 thous.;
- on average 21 thous. unemployed were registered every month.

*January 1st, 2002:*

- 224,0 thous. registered unemployed, where: 45,5 per cent females, 52,5 per cent males; 12,8 per cent youth; 33,3 per cent long term unemployed.

### The main changes in labour supply

► *In 2001, if compared with 2000:*

- number of unemployed males during the year decreased by 8,8 thous.;
- number of registered young unemployed is by 3,8 thous. less, pre-pension age unemployed – by 1,5 thous. less;
- number of unemployed who have recently (within 1 year) lost their jobs decreased by 8,2 thous.;
- number of unemployed without professional preparation remained the same – 66,4 thous.;
- number of unemployed females increased by 0,5 thous.
- *On January 1st, 2002, of compared with January 1st, 2001:*
- difference between the share of males and females in total number of unemployed decreased from 9 to 5 per cent points;
- share of unemployed youth decreased by 2,4 per cent points (to 12,8 per cent);
- share of those repeatedly seeking job increased by 3,2 per cent point (up to 38,8 per cent);

- share of long term unemployed increased the most – by 5,7 per cent points (up to 33,3 per cent).

### Labour demand

*During 2001:*

- 134,6 thous. registered job vacancies, where: 64,6 per cent for permanent job; 82,0 per cent in private sector; 52,4 per cent in service sector; 74,2 per cent for skilled labour force;
- 27,1 thous. increased labour demand;
- on average 12 thous. new job offers were registered every month.

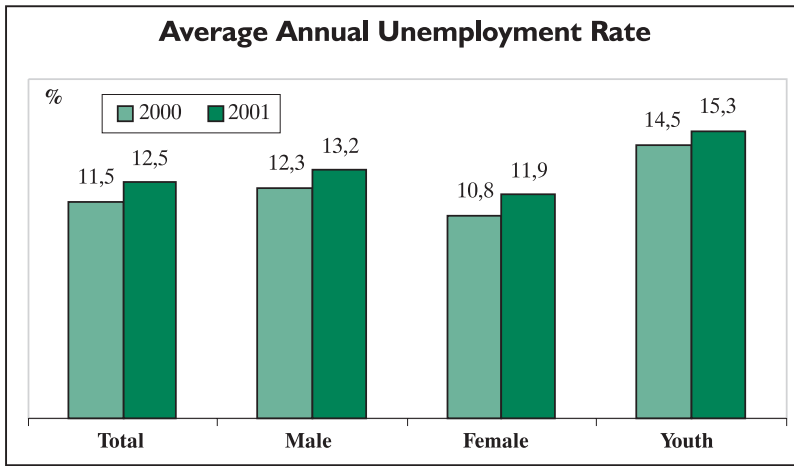
### The main changes in labour demand

► *For permanent job by*

- economic sectors
- increased in services sector – by 5,2 per cent point;
- decreased in industry – by 3,9 per cent point; in agriculture – by 1,5 per cent point;
- remained the same – in construction.
- according to the educational level
- demand for specialists with high education and vocational training increased by more than 2 per cent points and labour demand for specialists having higher education increased by 1 per cent point;
- demand for unskilled workers decreased by 5 per cent points.

► *For temporary jobs:*

- sectors of agriculture and construction provide the largest amount of temporary jobs, more than 50 per cent and approximately 40 per cent correspondingly;
- according to qualification requirements, the largest demand was for unskilled workers (53 per cent).



### Employment rate

Indicator*	Employment, rate, %	Employed, thous.	Labour Force thous.
Total	49,6	1481,8	1774,7
Males	53,1	732,6	908,6
Females	46,6	749,2	866,1
Youth	22,7	121,2	175,2

\* Labour force survey data, May, 2001

### The main changes in employment rate

- Employment rate decreased by 1,6 per cent points, most of them males by 2,4 per cent points and youth – 3,9 per cent points;
- Employment decreased by 36,1 thous.;
- Labour force decreased by 18,9 thous. and youth labour force – by 23,2 thous.

### Unemployment rate

At the beginning of 2001 unemployment rate was 12,6 per cent and at the end of the year unemployment rate increased up to 12,9 per cent. The reason for that increase was decreased labour force.

On January 1st, 2002 unemployment rate was:

- 13,5 per cent males;
- 12,2 per cent females;
- 18,7 per cent youth.

Unemployment rate in Lithuania is higher than in Estonia (7,4 per cent) and Latvia (7,7 per cent), but less than in Poland (17,4 per cent).

The highest unemployment rate in the country was registered on March, April 1st – 13,2 per cent and with respect to the territories, on January 1st, 2002 it was the highest in Druskininkai – 29,9 per cent.

### Main changes of unemployment rate:

- average annual unemployment increased by 1 per cent point – up to 12,5 per cent;
- youth unemployment at the end of the year reached 18,7 per cent;
- gap between male and female unemployment decreased

from 1,9 per cent points at the beginning of the year to 1,3 per cent point at the end of the year;

- noticeable regional disparities of unemployment rate persist.

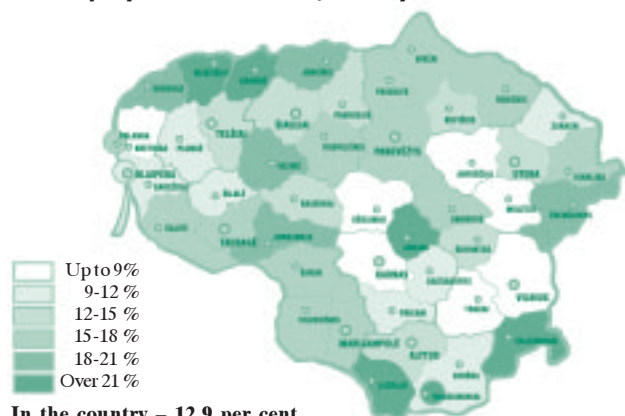
### The major disparities if compared with EU

In the process of Lithuania's accession to EU and integration into common European labour market, country's economy will be influenced by the processes of market globalisation, free movement of workers.

Labour market indicator*, %	EU	Lithuania
Employment rate	63,1	51,2
Unemployment rate	8,4	15,4
Male	7,3	14,2
Female	9,9	13,9
Youth	16,1	29,0
Share of long term unemployed	45,2	52,3

\* Labour force survey data, 2000

### Unemployment rate on January 1st, 2002



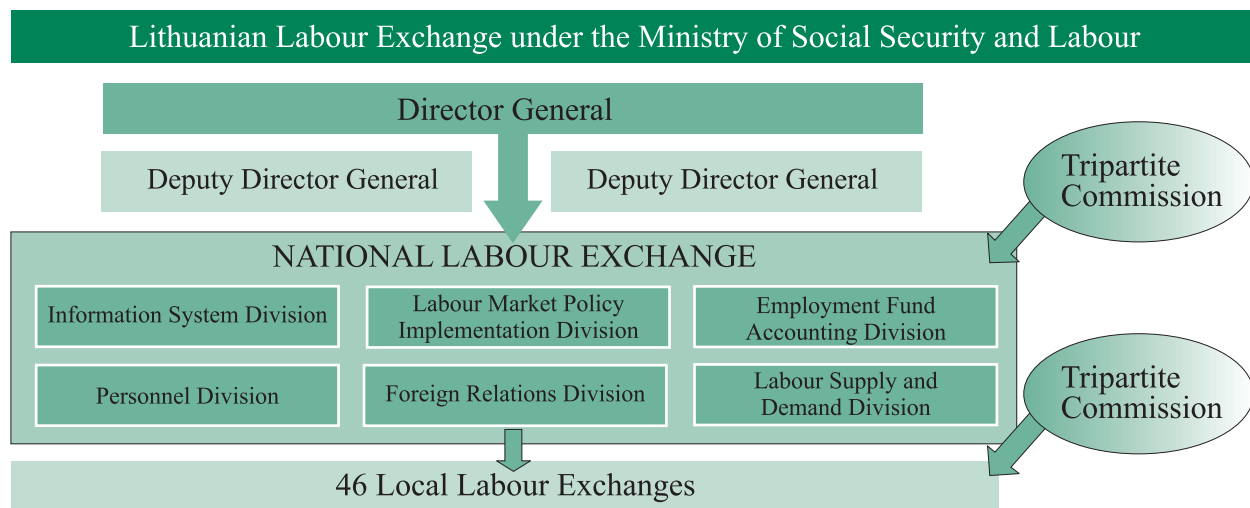
On January 1st, 2002 unemployment rate in separate territories was as follows:

- |                       |                   |
|-----------------------|-------------------|
| ● Highest             | ● Lowest          |
| Druskininkai – 29,9 % | Anykščiai – 7,3 % |
| Mažeikiai – 25,4 %    | Kretinga – 7,6 %  |
| Akmenė – 23,7 %       | Molėtai – 8,0 %   |

# The Lithuanian Labour Exchange – structure and main functions

Employment and labour market policy plays an active role in economic policy. The core tasks of the Lithuanian Labour Exchange are to find jobs for the unemployed and manpower for enterprises, to develop the unemployed by means of vocational training, employment support and to activate more people to augment the labour force.

- Since November 1991 Lithuanian Labour Exchange is a member of World Association of Public Employment Services (WAPES).
- Since June 1999 staff of Lithuanian Labour Exchange is a member of International Association of Personnel in Employment Security (IAPES).



## Active Labour Market Policy Programmes

**Unemployment prevention.** Assists the employees, who have been given a notice of dismissal because of their low qualification or inadequacy to new skills requirements, to undergo retraining or to maintain job by being employed in the same or in another enterprise.

**Vocational training.** Provides the unemployed with possibility to acquire professional qualification, improve qualification or undergo retraining in accordance with labour market demands.

**Public works.** Works, organised together with municipalities and employers, which help the job seekers to earn some money for living and mitigate social tension.

**Setting up of own business.** Promotes entrepreneurship among unemployed, provides organisational–financial support for individuals, setting up their own business.

**Subsidising of employment support.** Helps the unemployed who are additionally supported on labour market to integrate into labour market by means of establishment of new job places and for the disabled of the 1st and the 2nd groups –by creating of new job places and by determining of employment quotas for employers.

**Job clubs.** Encourage the unemployed to take active part in job search, provide knowledge and skills, increase their self confidence and chances to compete on labour market.

**Works subsidised from the Employment Fund.** Provide the unemployed people with possibility to acquire initial working skills, to determinate the gaps of professional knowledge and to fill them in during training courses or in work place as well as to consolidate their positions in permanent job.

## The Main Functions

- Analyses labour supply and demand and forecasts possible changes in the labour market;
- Conducts labour market monitoring and presents conclusions;
- Registers available job vacancies and unemployed individuals;
- Looks for job vacancies and provides information for employers and job seekers;
- Mediates placement of Lithuanian citizens and permanent residents;
- Together with municipalities and employers organises public works and refers to them;
- Organises works subsidised from the Employment Fund;
- Mediates and organises vocational training of the unemployed individuals and employees who have been a given notice of dismissal;
- Mediates placement of Lithuanian citizens and permanent residents' abroad;
- Disposes in the established manner of the financial resources received from the Employment Fund and submits reports on their use, gives recommendations concerning the application of the Employment Fund finances;
- Participates in preparation of employment programs;
- Evaluates influence on the local labour market of dismissal of a group of employees and together with municipalities and employers prepares programs of unemployment prevention;
- Extends and pays unemployment benefits;
- Forms, generalises, analyses and announces labour market statistical information.

# The main events of Lithuanian Labour Exchange in 2001

## January

The evaluations reports of local labour exchange's activity were carried out.

Conference "Results of Labour Market Forecasting".

The commencement of co-operation with private recruitment agencies from Ireland and the United Kingdom of Great Britain and Northern Ireland.

## February

Implementation on Internet of new job search and supply system. It was prepared together with the experts of Swedish National Labour Market Board. Conference "Opportunities of Unemployed Youth on Labour Market".

Competitive negotiations with selected training institutions and enterprises concerning vocational training of unemployed and people, who have been given a notice of dismissal.

## March

Signing of a co-operation agreement between Lithuanian Labour Exchange and Law University.

## April

International Conference "Labour Market in 1991–2001 and Activity of Lithuanian Labour Exchange" to celebrate the 10<sup>th</sup> Anniversary of its activity.

The first Conference of Lithuanian Labour Exchange, in which Vidas Šlekaitis, Director General, directly by Internet answered all the submitted questions.

Presentation of labour market monitoring results and publications "Who is looking for a job in Lithuania" and "What is labour demand in Lithuania".

## May

IAPES (International Association of Personnel in Employment Security) District XIX Conference "Co-operative Human Resource Development – Public and Private Sector Partnership".

Implementation of joint Lithuanian Labour Exchange–Swedish National Labour Market Board's project "Assistance for the Development of Armenian Employment Services".

Opening of Information and Consultation Centre in Utena Labour Exchange.

## June

Conference "Information Technologies – for Job Seekers".

Signing of a co-operation agreement between Lithuanian Labour Exchange and Vytautas Magnus University.

Successful implementation of Lithuanian Labour Exchange–Swedish National Labour Market Board's co-

operation project "Improvement of Lithuanian Labour Exchange's Activity".

The commencement of co-operation between Lithuanian and Estonian local labour exchanges.

Signing of a co-operation agreement and letters of intent between Panevėžys labour exchange and Piarnu employment service.

## August

Implementation of local employment initiative projects in the territories with the highest rates of unemployment.

Signing of a co-operation agreement between Lithuanian Labour Exchange and Lithuanian Builders Association.

## September

Improvement of LLE personnel's skills level by means of module training.

Opening of Plungė labour exchange's Information and Consultation centre in Rietavas.

Presentation of the publication "Pieces of advice for job seekers".

## October

Conference "Decreasing Youth Unemployment" in the Seimas (Parliament) of the Republic of Lithuania, attended by the directors of all local labour exchanges.

Presentation made by V.Šlekaitis, Director General of Lithuanian Labour Exchange.

The commencement of co-operation of Lithuanian Labour Exchange with Norwegian employers from construction sector.

## November

Press conference "Labour Market Forecasts for 2002" and "Mass Lay-off Handbook", prepared with the help of Danish Employment Ministry.

Conference "Lithuania's Economics – Social Situation and Development Strategy", organised in Lithuania Science Academy. Vidas Šlekaitis, Director General, made the statement "The Strategy of Lithuanian Labour Market Development".

Forming of Youth Job Centres' concept and preparation of the project of Youth and Single Parents Centres.

## December

The commencement of EU PHARE Twinning project "Preparation for Participation in European Employment Strategy"

Signing of a co-operation agreement between Lithuanian Labour Exchange and Vilnius County Administration.

Opening of Ignalina labour exchange's Information and Consultation Centre in Visaginas.

# Key labour market indicators in 2001

Districts, local labour exchanges	Number of registered unemployed		Placed into jobs	Placement into jobs according to preferential patent	Granted unemployment benefit	Involved into active labour market policy programmes	Unemployment rate, % 01 01 2002
	per year	01 01 2002					
<b>TOTAL</b>	<b>249700</b>	<b>224040</b>	<b>134108</b>	<b>14054</b>	<b>63540</b>	<b>106582</b>	<b>12,9</b>
<b>Alytus county</b>	<b>15173</b>	<b>14340</b>	<b>8593</b>	<b>808</b>	<b>3995</b>	<b>6877</b>	<b>16,1</b>
Alytus	7883	6513	4795	597	2224	3228	12,8
Druskininkai	2717	3406	1773	132	898	1344	29,9
Lazdijai	2307	2754	647	40	301	1398	23,3
Varėna	2266	1667	1378	39	572	907	11,3
<b>Kaunas county</b>	<b>41656</b>	<b>33117</b>	<b>20384</b>	<b>1941</b>	<b>10012</b>	<b>15345</b>	<b>9,7</b>
Kaunas	24740	19340	11138	1005	5725	8003	8,4
Jonava	4313	4854	3182	424	1085	2196	22,9
Kaišiadorys	2575	1440	1432	67	634	1254	10,8
Kėdainiai	4105	3340	2282	182	1102	1682	8,1
Prienai	1932	1531	1012	165	622	942	9,0
Raseiniai	3991	2612	1338	98	844	1268	13,4
<b>Klaipėda county</b>	<b>25873</b>	<b>22025</b>	<b>15032</b>	<b>1383</b>	<b>7081</b>	<b>11362</b>	<b>11,0</b>
Klaipėda	14865	12949	9028	656	4418	6180	9,5
Palanga	1539	1457	1208	363	484	776	15,8
Kretinga	2541	1341	1613	152	662	982	7,6
Škuodas	2178	2539	908	86	505	1610	20,5
Šilutė	4750	3739	2275	126	1012	1814	15,0
<b>Marijampolė county</b>	<b>15305</b>	<b>15948</b>	<b>8116</b>	<b>1129</b>	<b>4085</b>	<b>6704</b>	<b>17,4</b>
Marijampolė	7687	7887	5016	712	2319	2975	17,3
Šakiai	3446	3297	1476	8	501	1686	17,5
Vilkaviškis	4172	4764	1624	409	1265	2043	17,3
<b>Panevėžys county</b>	<b>22030</b>	<b>26362</b>	<b>14225</b>	<b>2389</b>	<b>6246</b>	<b>11293</b>	<b>17,1</b>
Panevėžys	12700	14691	8016	1655	3008	4835	17,0
Biržai	2368	2811	1207	127	914	1457	15,8
Kupiškis	1359	1284	1105	70	536	1265	12,3
Pasvalys	2136	4221	1542	160	830	1826	22,8
Rokiškis	3467	3355	2355	377	958	1910	16,1
<b>Šiauliai county</b>	<b>29648</b>	<b>31519</b>	<b>19521</b>	<b>1501</b>	<b>7357</b>	<b>16259</b>	<b>16,9</b>
Šiauliai	15896	14083	11130	912	3816	6418	14,8
Akmenė	2268	4271	1706	119	775	2582	23,7
Joniškis	2216	3247	1846	143	812	1434	20,7
Kelmė	3479	3979	1368	157	418	1848	19,4
Pakruojis	2144	1958	1126	46	583	1701	14,5
Radviliškis	3645	3981	2345	124	953	2276	16,5
<b>Tauragė county</b>	<b>10739</b>	<b>10958</b>	<b>5325</b>	<b>640</b>	<b>2414</b>	<b>4728</b>	<b>16,0</b>
Jurbarkas	3421	3853	1806	285	573	1788	19,7
Šilalė	2213	1789	790	113	509	836	11,4
Tauragė	5105	5316	2729	242	1332	2104	16,0
<b>Telšiai county</b>	<b>13832</b>	<b>13922</b>	<b>7991</b>	<b>721</b>	<b>2872</b>	<b>5645</b>	<b>17,4</b>
Mažeikiai	5105	8267	2692	296	977	2096	25,4
Plungė	4216	2626	3067	209	896	1964	11,0
Telšiai	4511	3029	2232	216	999	1585	12,9
<b>Utena county</b>	<b>12408</b>	<b>11395</b>	<b>8204</b>	<b>1188</b>	<b>3432</b>	<b>6709</b>	<b>12,4</b>
Anykščiai	1783	1189	1017	113	538	1191	7,3
Ignalina	3897	4411	2469	142	1267	1997	16,6
Molėtai	1607	963	853	24	292	857	8,0
Utena	3414	3822	2748	789	1018	1640	14,6
Zarasai	1707	1010	1117	120	317	1024	9,6
<b>Vilnius county</b>	<b>63036</b>	<b>44454</b>	<b>26717</b>	<b>2354</b>	<b>16046</b>	<b>21660</b>	<b>10,1</b>
Vilnius	45627	31150	18482	1482	12147	14266	8,7
Šalčininkai	4378	3629	1062	183	796	1835	22,4
Širvintos	1913	1212	917	106	336	1082	13,6
Svenčionys	3172	2800	1940	44	818	1299	19,0
Trakai	4113	1841	1953	236	1104	1612	8,5
Ukmergė	3833	3822	2363	303	845	1566	16,6

NATIONAL LABOUR EXCHANGE  
Geležinio Vilko Str. 3A,  
[www.ldb.lt](http://www.ldb.lt)

The publication was prepared for printing by publishing group  
“Darbo biržos naujienos”

05-03-2002. 2.5 printer's sheets. Printed in 500 copies. Order No.  
Printed by BSPB printing-house  
Verkių Str. 7, bldg18, LT-2042 Vilnius